

# Wide-Field Video Microscope Unit WIDE VMU Series



Mitutoyo Corporation  
80th Anniversary  
Since 1934

*Taking video microscopy to the next level with a seven times bigger field than earlier models. Furthermore, support for dark-field observation*

Optical Measuring



Catalog No. E14014

**Mitutoyo**

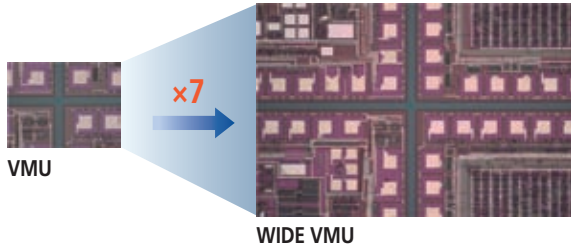


# Wide-Field Video Microscope Unit WIDE VMU Series

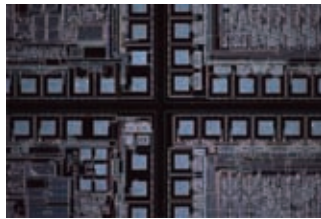


## FEATURES

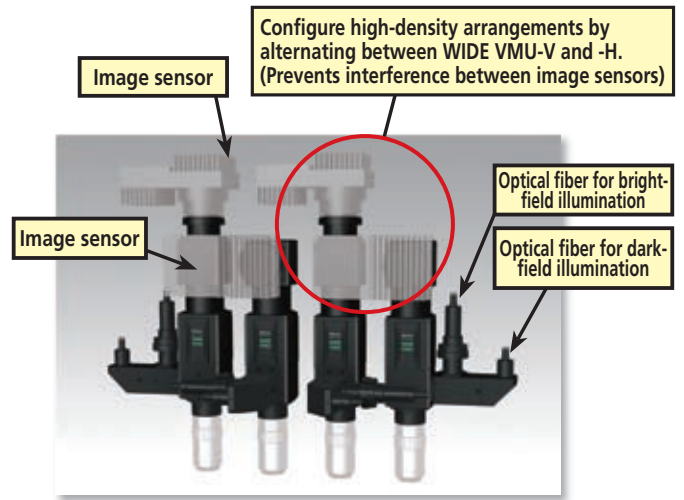
- Incorporating a wide-field image sensor (2-inch equivalent) provides a field radius three times longer, and field size seven times bigger, than the VMU Series, greatly assisting inspection efficiency improvements.
- Bulk inspections covering a wide area can be carried out with multiple units in a high-density arrangement.



- In addition to normal bright-field observation, this series supports dark-field observation, as suitable for visual inspection and scratch inspection, and polarized light observation, suitable for objects with polarized light.



WIDE VMU dark-field



## SPECIFICATIONS

Model	For Bright-Field Observation		For Bright-/Dark-Field Observation	
	WIDE VMU-V	WIDE VMU-H	WIDE VMU-BDV	WIDE VMU-BDH
Order No.	378-515	378-516	378-517	378-518
Camera mounting orientation	Vertical	Horizontal	Vertical	Horizontal
Camera mount	F-Mount, C-Mount			
Supported sensor size	2-inch equivalent (APS-C format)			
Optical system	Observation	Image field: $\phi 30$ (1X tube lens)		
	Illumination	Single-port fiber-optic illumination	Dual-port fiber-optic illumination Bright/dark field switching with light source on-off	
Objective mount	Bright-field, single-mount		Bright-/Dark-field, single-mount	
Suitable objectives	Bright-field (BF) objective series		Bright-/Dark-field (BD) objective series	
Accessories (optional)	Motorized turret; focusing unit; polarizer			

\* In addition to the above, a laser AF (LAF) model also will be released.

## Mitutoyo Corporation

20-1, Sakado 1-Chome,  
Takatsu-ku, Kawasaki-shi,  
Kanagawa 213-8533, Japan  
T +81 (0) 44 813-8230  
F +81 (0) 44 813-8231  
<http://www.mitutoyo.co.jp>

# Mitutoyo

Export permission by the Japanese government may be required for exporting our products according to the Foreign Exchange and Foreign Trade Law. Please consult our sales office near you before you export our products or you offer technical information to a nonresident.

Coordinate Measuring Machines

Vision Measuring Systems

Form Measurement

Optical Measuring

Sensor Systems

Test Equipment and Seismometers

Digital Scale and DRO Systems

Small Tool Instruments and Data Management

Note: All information regarding our products, and in particular the illustrations, drawings, dimensional and performance data contained in this pamphlet, as well as other technical data are to be regarded as approximate average values. We therefore reserve the right to make changes to the corresponding designs, dimensions and weights. The stated standards, similar technical regulations, descriptions and illustrations of the products were valid at the time of printing. Only quotations submitted by ourselves may be regarded as definitive. Our products are classified as regulated items under Japanese Foreign Exchange and Foreign Trade Law. Please consult us in advance if you wish to export our products to any other country. If the purchased product is exported, even though it is not a regulated item (Catch-All controls item), the customer service available for that product may be affected. If you have any questions, please consult your local Mitutoyo sales office.